

MIMETE Grade	C	Cr	Fe	Mn	Mo	N	Ni	P	S	Si	Reference Standard
MARS F51	≤ 0,030	21,0 ÷ 23,0	bal	≤ 2,00	2,5 ÷ 3,5	0,08 ÷ 0,20	4,5 ÷ 6,5	≤ 0,030	≤ 0,020	≤ 1,00	ASTM A182

MARS F51

INTRO

MIMETE's plant has been specifically designed to serve the additive market. A VIGA (vacuum induction melting inert gas atomization) ensures high purity and spherical powders. Moreover, thanks to tailored post-processing facilities and a fully equipped in-house laboratory, MIMETE is able to guarantee to its customers the highest quality standards and full process control. Every step of the process is conducted under inert gas and it is fully monitored and traced through the latest software application.

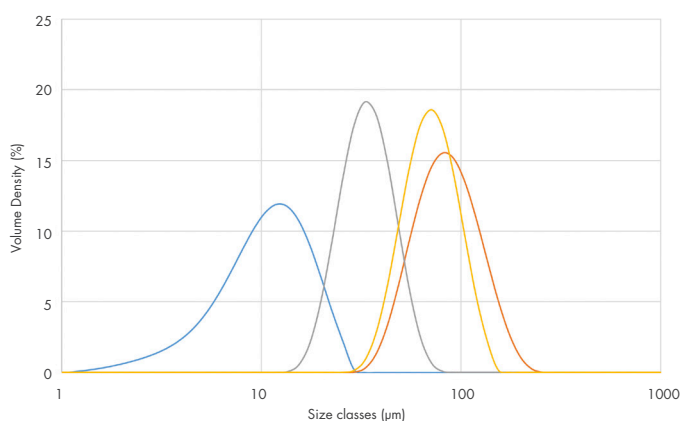
Through co-design solutions, we stand out from the others: by working in close relationship with customers, we achieve a level of understanding of the final application. This process enables us to develop the perfect combination of properties and therefore to produce the most performing metal powder available on the market.

This datasheet describes standard product and properties guaranteed on powder available on stock, it might be considered just a mere guide to introduce you to what MIMETE can offer.

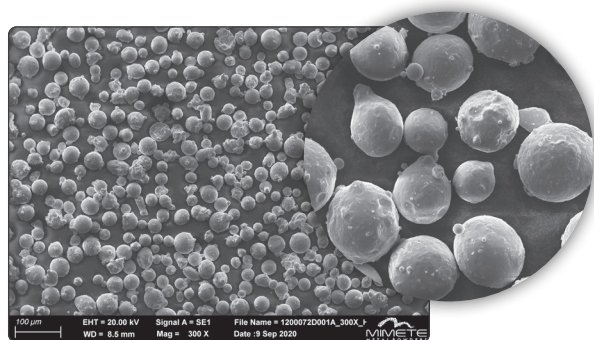
Customization is our expertise.

all features can be customized

PRODUCT	MARS F51 - UNS S31803 according to ASTM A182 Duplex stainless steel with relatively high content of Cr, Mo, and Ni. It shows high corrosion resistance, medium mechanical strength.
PRODUCTION PROCESS	Vacuum inert gas atomization
PARTICLE SHAPE	Spherical
PACKAGING	10 kg plastic sealed bottle with silica bag



Depending on your specific requirements, MIMETE can provide any particle size



TECHNOLOGICAL PROPERTIES

- Flowability (Hall Flowmeter): ≤ 30 s/50g
- Apparent Density: 4,0 g/cm³

Typical values for 15-45 powder size